

PUBLIC SAFETY AND SECURITY RESPONSE

Capability Definition

Public Safety and Security Response is the capability to reduce the impact and consequences of an incident or major event by securing the affected area, including crime/incident scene preservation issues as appropriate, safely diverting the public from hazards, providing security support to other response operations and properties, and sustaining operations from response through recovery. Public Safety and Security Response requires coordination among officials from law enforcement, fire, and emergency medical services (EMS).

Outcome

The incident scene is assessed and secured, access is controlled, security support is provided to other response operations (and related critical locations, facilities, and resources), emergency public information is provided, while protecting first responders and mitigating any further effect to the public at risk, and any crime/incident scene preservation issues have been addressed.

Relationship to National Response Plan Emergency Support Function (ESF)/Annex

This capability supports Emergency Support Function (ESF) #13: Public Safety and Security.

Preparedness Tasks and Measures/Metrics

Activity: Plan for Public Safety and Security Response During Large-Scale, All-Hazards Events	
Definition: Review existing and/or develop new strategies, plans, procedures, programs, or systems to respond to large-scale, all-hazards events.	
Critical Tasks	
Res.B3d 1.2	Review, revise and develop public safety policies, protocols, and procedures to be implemented to effect a command and control structure, consistent with NIMS
Res.B3d 1.2.2	Develop plans and procedures to ensure interoperable communications during public safety and security response
Res.B3d 1.2.3.1	Enter into interagency agreements and memorandums of understanding with appropriate surrounding agencies and jurisdictions, with the legal authority of the jurisdiction, to ensure adequate response and access to supplemental personnel
Res.B3d 1.2.3.2	Identify required resources and enter into contracts, as appropriate, to access and provide required resources during a crisis response to shelter, feed, and maintain a significant cadre of public safety and other related first responders
Res.B3d 1.2.1	Review and improve, as appropriate, standard operating procedures for the notification and mobilization of public safety resources during a crisis response
Res.B3d 1.4.1	Review and improve existing planned evacuation routes and staging areas to determine sufficient public safety resources required to establish and maintain perimeters, safety zones, and public order as well as facilitate evacuations and/or sheltering-in-place activities

Res.B3d 1.4.2	Review plans for decontamination sites and access to decontamination equipment, including personal protective equipment for responders	
Res.B3d 1.4.3	Ensure hospital and medical supply resources, as well as other key infrastructure, have been identified, and agreements exist or are drafted regarding the maintenance of security at these facilities during a crisis response	
Res.B3d 1.4.4	Review and develop as appropriate, in coordination with legal counsel, such as the city/county attorney's and/or State Attorney General Office, , policies regarding public safety enforcement actions required to maintain the public order during a crisis response, to include teams of enforcement officers for handling of persons disrupting the public order, violating laws, requiring quarantine, and so forth	
Res.B3d 1.4.1.1	Develop and document, in conjunction with correctional and jail officials, coordination strategies for managing and possibly relocating incarcerated persons during a crisis response	
Res.B3d 1.4.4.1	Identify and enter into agreements to secure the resources needed for the processing and temporary detention of law violators	
Res.B3d 1.4.2.1	Review existing and develop protocols as appropriate for the operation of decontamination sites, and out-processing areas	
Res.B3d 1.4.5	Establish a recovery strategy to access reimbursable opportunities, replenish supplies and equipment, re-assign personnel, and return to normal operation	
Preparedness Measures		Metrics
Multi-disciplinary law enforcement and public safety agency planning teams have been established, per NIMS compliance.		Yes/No
Plans are in place for providing security for the public and properties on and around an incident site		Yes/No
Plans are in place for supporting public safety in and around an incident site		Yes/No
Plans are in place for the post-incident provision of temporary prisoner holding facilities and arrest processing documentation		Yes/No

Activity: *Determine appropriate training and exercises necessary to address existing gaps*

Definition: Review existing training programs. Compare needs and gaps against available training assets.

Critical Tasks

Res.B3d 2.1.1	Identify gaps in personnel training at the awareness and first response operational level, to include familiarity with the expectations of and demands on the public safety responders as set forth in agency plans, protocols, and procedures for a crisis response
Res.B3d 2.1.2	Identify existing training resources and opportunities available at the Federal, State, and local level
Res.B3d 2.1.3	Develop a training strategy for all personnel
Res.B3d 2.2.1	Develop a strategy, in coordination with area jurisdictions, to participate in and/or conduct exercises which incorporate all existing response requirements, identify gaps, develop improvement plans, and implement preparedness enhancements

Preparedness Measures	Metric
Percent of personnel trained at the awareness level	100%
Percent of personnel trained at the operational level	Identified in training strategy
Frequency of exercises	Annual

Performance Tasks and Measures/Metrics

Activity: *Command and Control Public Safety and Security Response Operations*

Definition: *In response to a notification for security assets, establish the management and coordination of the Public Safety and Security Response, from activation through to demobilization*

Critical Tasks

Res.B3d 3.1.1	Identify law enforcement personnel needed to maintain public safety and security
Res.B3d 3.1.3	Establish staging areas for law enforcement to conduct deputization, personnel assignment, and briefing prior to entering the impacted area.
Res.B3d 3.5	Communicate with other response agencies regarding public safety response
Res.B3d 3.1.2	Deploy appropriate relief personnel for public safety and security
Res.B3d 3.2	Coordinate public safety and security operations with Incident Command
Res.B3d 3.3.3	Arrange for shelter, housing, and feeding for law enforcement responders
Res.B3d 3.3.2	Arrange for proper sheltering, care, and feeding of detainees

Performance Measures

Metric

Time to implement safety and security plans and procedures	Within 1 hour of incident
Site safety plan is communicated to all first responders at the incident	Yes/No
Time to deploy sufficient relief personnel to maintain public safety throughout a long-term incident (relief needed is estimated at 50 percent of total uniformed (patrol) staffing of a jurisdiction having primary responsibility for the incident)	Within 12 to 15 hours of initial deployment

Activity: Activate Public Safety and Security Response**Definition: Upon notification, mobilize and deploy to begin operations.****Critical Tasks**

Res.B3d 4.1	Conduct a public safety and security response
Res.B3d 4.1.1	Coordinate and receive instructions from tactical operations
Res.B3d 4.1.2	Ensure that responders have the appropriate equipment to perform assigned tasks

Performance Measures**Metric**

Time to deploy sufficient personnel to perform public safety and security duties <i>Small local incidents: use on-duty and mutual aid personnel</i> <i>Large-scale incidents: Target should be equal to 50 percent of total uniformed (patrol) staffing of jurisdiction having primary responsibility for the incident</i>	Within 12 hours of initial deployment
All responding public safety personnel are self-sufficient (bring their own sleeping/eating/restocking supplies) for up to a seven day deployment	For up to 7 days

Activity: Assess the Incident Scene and Secure the Area**Definition: Upon arriving on scene, assess for immediate rescue needs, for remaining safety and security threats, and initiate security operations. Identify and implement protective actions for high priority key facilities or resources that may require heightened security.****Critical Tasks**

Res.B3d 5.1	Secure the incident site
Res.B3d 5.2.2	Determine the appropriate emergency medical personnel to respond on site for injuries and fatalities
Res.B3d 5.1.1	Identify and establish inner most incident/crime scene perimeters
Res.B3d 5.1.2	Document observations regarding the affected area
Res.B3d 5.2.3	Develop and maintain a reserve corps of tactical officers at the command post to respond to unexpected occurrences

Performance Measures**Metric**

Time to secure the incident site	Less than 30 minutes from initial units arrival on scene
Hot, warm, and cold zones have been identified and segregated	Yes/No
On scene personnel accountability system has been implemented	Yes/No

Activity: Control Traffic, Crowd, and Scene

Definition: Direct/redirect traffic and pedestrians out of the affected area(s). Assess, coordinate, and establish force protection and perimeter zones, maintain a visible and effective security presence to deter criminal conduct and maintain law and order

Critical Tasks

Res.B3d 6.1	Identify and establish an incident perimeter and zones
Res.B3d 6.1.1	Identify security zone requirements
Res.B3d 6.2	Establish force protection
Res.B3d 6.2.1	Provide force protection for search and rescue personnel to allow them to operate safely
Res.B3d 6.1.3	Provide and plan for access to the site for emergency workers and other necessary and appropriate personnel
Res.B3d 3.4	Implement and maintain an on-scene personnel identity management system
Res.B3d 6.2.5	Secure animals during an animal health emergency
Res.B3d 6.1.2	Secure critical sites such as hospitals and medical supply distribution points
Res.B3d 6.2.2	Plan and provide protection and security for abandoned properties within and around the incident site
Res.B3d 6.3	Control traffic and crowds

Performance Measures

Metric

All incident site control zones/points have been clearly identified and staffed	Yes/No
Perimeter zones are coordinated jointly by hazardous materials personnel, fire/rescue, and law enforcement	Yes/No
Time to identify and staff all traffic control and alternative ingress/egress routes	Less than 30 minutes from initial units arrival on scene
New or secondary injuries to the public and first responders at or around the incident site are prevented	Yes/No
Damaged buildings and debris blocking emergency response ingress/egress have been removed	Yes/No
Time to coordinate stoppage of all non-critical cargo and passenger rail, maritime, and highway transportation into incident area	Within 1 hour of the incident

Activity: Maintain Public Order

Definition: Provide a visible law enforcement presence at key locations within the affected area. Protect people and property, and deter criminal activity

Critical Tasks

Res.B3d 7.1	Assess situation for public order related concerns	
Res.B3d 7.3	Implement emergency public safety and security assessment procedures	
Res.B3d 7.1.1	Conduct an initial reconnaissance of the area	
Res.B3d 7.2	Coordinate with appropriate unit and develop a plan of action	
Res.B3d 7.4.1	Conduct tactical deployment	
Res.B3d 7.4.2	Use tactical operations teams to conduct searches of high priority unsecured sites to establish security and detain lawbreakers as necessary	
Res.B3d 7.5	Maintain security operations	
Res.B3d 7.1.2	Request assets required to provide security	
Res.B3d 7.5.1	Provide security for public officials and investigation teams	
Res.B3d 7.5.2	Institute and conduct security operations controlling personnel who are allowed to enter damaged and condemned buildings and the contents that they are allowed to remove	
Performance Measures		Metric
Time to initiate and conduct search and/or apprehension procedures		Less than 30 minutes from the notification or witnessing of suspected criminal activity

Activity: *Conduct Law Enforcement Operations*

Definition: Upon notification or suspicion of criminal activity, identify, and take appropriate enforcement action with lawbreakers at or around the incident site.

Critical Tasks

Res.B3d 8.1	Coordinate with investigators to interview witnesses/bystanders in order to identify suspects	
Res.B3d 7.4.2	Use tactical operations teams to conduct searches of high-priority unsecured sites to establish security and detain lawbreakers as necessary	
Res.B3d 8.3	Make arrests as necessary	
Performance Measures		Metric
Appropriate and timely enforcement action taken		Yes/No

Activity: *Manage Criminal Justice Population*

Definition: Manage criminal justice population to include incarcerated persons, those under criminal justice supervision, and tactically arrested individuals in the affected area.

Critical Tasks

Res.B3d 9.1	Establish mobile arrest and processing sites for arrestees
-------------	--

Res.B3d 9.1.1	Provide space in mobile arrest and processing site/area for: finger printing and photos, desk space, interview area, property storage, secure storage for valuables and/or evidence, isolation area for violent detainees, and secure area for vehicles	
Res.B3d 9.2.1	Process those arrested (photos, fingerprinting) and document arrests	
Res.B3d 9.2.2	Set up improvised holding cells to manage detainees	
Res.B3d 9.2.3	Detain those arrested (in improvised holding cells)	
Res.B3d 9.2.3.1	Provide detainee supervision 24/7 for the length of the incident	
Res.B3d 9.2.3.2	Ensure holding facilities have provisions for food, access to drinking water and toilet facilities, and trash removal	
Res.B3d 9.2.3.3	Establish system for documenting, securing, storing, transporting, and releasing detainee property	
Res.B3d 9.2.3.4	Establish system to track detainee movement – in-coming, transfers, and releases	
Res.B3d 9.2.3.5	Distribute notification of the destination holding facility	
Res.B3d 9.2.3.6	Provide space for Prosecutors/Public Defenders to meet with operations staff and/or detainees	
Res.B3d 9.2.4	Transport detainees to secure lock-up facility	
Res.B3d 9.2.5	Ensure that established procedures for transfer of detainees during major emergencies are followed	
Res.B3d 9.3.1	Designate alternate facilities to ensure continued operations by local, tribal, State, and Federal prosecutors/public defenders	
Res.B3d 9.3.2	Set up improvised court facilities to ensure local, tribal, State, and Federal court services continue	
Res.B3d 9.3.3	Implement protocols for contacting appropriate parole/probation agencies of any changes in residency status	
Res.B3d 9.3.4	Establish protocols for alternate housing facilities for local, State, and Federally incarcerated prisoners	
Res.B3d 9.3.5	Establish equipment lists and mobile booking kits and store at strategic locations	
Res.B3d 9.3.5.1	Inventory mobile booking kits on a regular basis to ensure that equipment and materials have not been removed or damaged and remain in working order	
Res.B3d 9.3.6	Ensure the capacity to run records checks for warrants, holds on detainees, and terrorist lists	
Performance Measures		Metric
Time to identify and equip an arrest processing team to intake, process, and document a large number of arrests		Within 1 hour of initial deployment
Time to coordinate and establish temporary holding cells for those arrested		Within 2 hours of initial deployment
Time to coordinate and establish prisoner transport		Within 2-4 hours of initial deployment
Time to coordinate and establish alternate facilities for prosecutor/public defenders		Within 2 hours of initial deployment

Time to coordinate and establish alternate facilities for court services	Within 2 hours of initial deployment
Time to coordinate for alternate housing facilities for local, state, federally incarcerated prisoners	Within 1 hour of initial deployment

Activity: Demobilize Public Safety and Security Response Operations

Definition: Return to normal operations

Critical Tasks

Res.B3d 10.1.1	Clear the incident scene upon completion of assigned temporary duties, or as directed by superiors
Res.B3d 10.1.2	Return local forces to regular service
Res.B3d 10.1.3	Recall temporary assistance resources to staging areas for out processing
Res.B3d 10.3	Conduct decontamination of all out processing personnel and equipment
Res.B3d 10.3.1	Identify public safety and security assets required for decontamination activities
Res.B3d 10.3.2	Coordinate with HazMat personnel to establish decontamination sites
Res.B3d 10.3.3	Coordinate with HazMat personnel to decontaminate affected public safety facilities and equipment
Res.B3d 10.2.1	Debrief all out processing personnel
Res.B3d 10.4.1	Activate reimbursement process for public safety and security resources
Res.B3d 10.4.2	Receive and process reimbursement requests
Res.B3d 10.4.3	Process compensation claims and related administrative activities
Res.B3d 10.5.1	Rehabilitate and replenish public safety and security resources
Res.B3d 10.5	Reconstitute personnel and equipment
Res.B3d 10.2.2	Participate in incident debriefing
Res.B3d 10.1.4	Identify staff needs dependant upon their upon their level of involvement and/or hours committed to the incident
Res.B3d 10.2	Decontaminate, debrief, and out-process Law Enforcement personnel prior to leaving the impacted area

Performance Measures

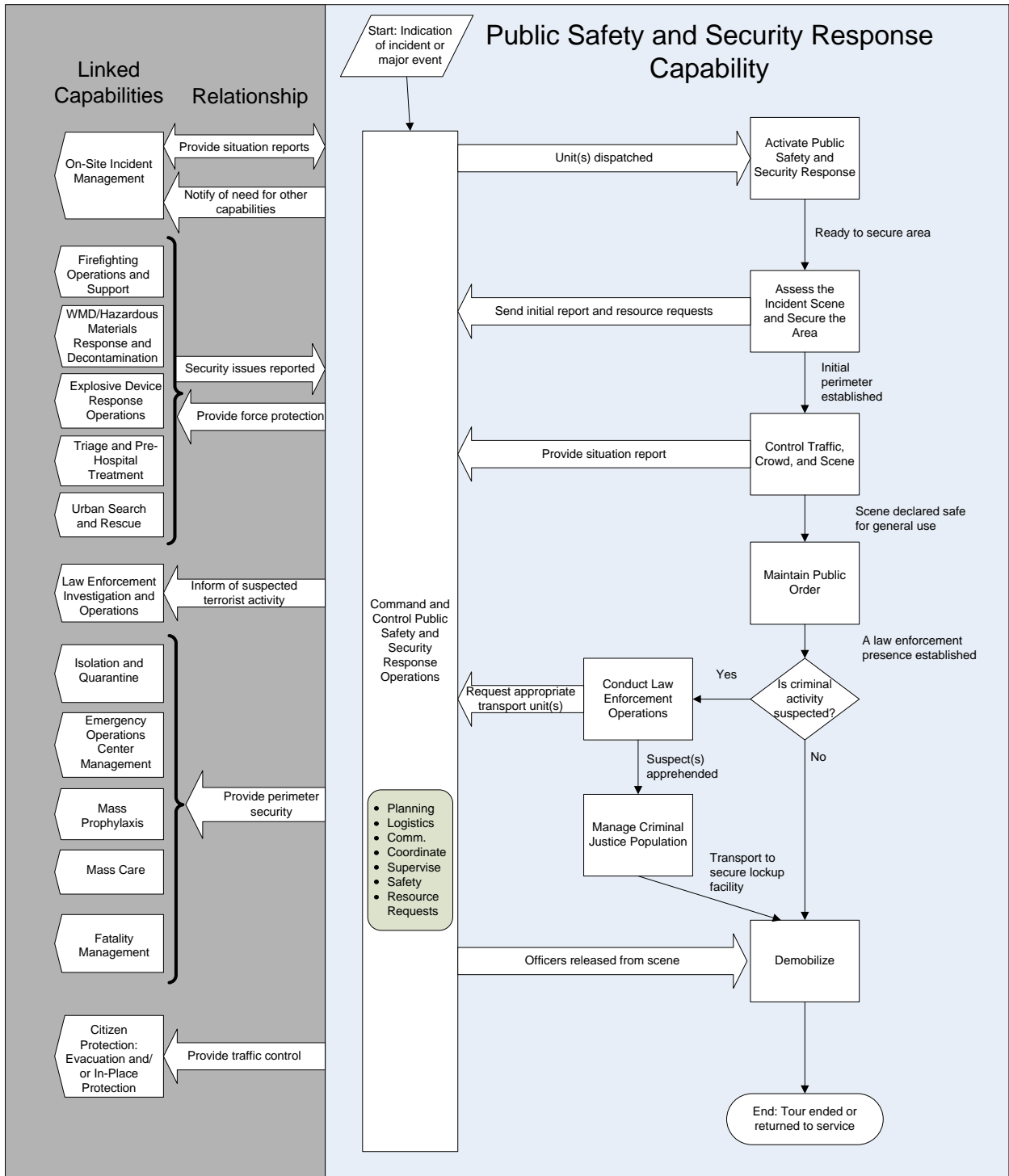
Metric

Time to restore public safety personnel to normal or original operations	Less than 12 hours from start of Demobilization
Public safety and security response personnel are debriefed	Yes/No

Linked Capabilities

Linked Capability	Relationship
On-Site Incident Management	Public Safety and Security Response provides the notification of the need for other capabilities to On-Site Incident Command, and they both provide situation reports to each other.
Firefighting Operations and Support	Public Safety and Security Response provides force protection to Firefighting Operations and Support, while Firefighting Operations and Support reports security issues to Public Safety and Security Response.
WMD/Hazardous Materials Response and Decontamination	Public Safety and Security Response provides force protection to WMD/Hazardous Materials Response and Decontamination, while WMD/Hazardous Materials Response and Decontamination reports security issues to Public Safety and Security Response.
Explosive Device Response Operations	Public Safety and Security Response provides force protection to Explosive Device Response Operations, while Explosive Device Response Operations reports security issues to Public Safety and Security Response.
Triage and Pre-Hospital Treatment	Public Safety and Security Response provides force protection to Triage and Pre-Hospital Treatment, while Triage and Pre-Hospital Treatment reports security issues to Public Safety and Security Response.
Urban Search and Rescue	Public Safety and Security Response provides force protection to Urban Search and Rescue, while Urban Search and Rescue reports security issues to Public Safety and Security Response.
Law Enforcement Investigations and Operations	Public Safety and Security Response provides information on suspected terrorist activity to Law Enforcement Investigations and Operations.
Isolation and Quarantine	Public Safety and Security Response provides perimeter security to Isolation and Quarantine.
EOC Management	Public Safety and Security Response provides perimeter security to EOC Management.
Mass Prophylaxis	Public Safety and Security Response provides perimeter security to Mass Prophylaxis.
Mass Care	Public Safety and Security Response provides perimeter security to Mass Care.
Fatality Management	Public Safety and Security Response provides perimeter security to Fatality Management.
Citizen Evacuation and Shelter in Place	Public Safety and Security Response provides traffic control to Citizen Evacuation and Shelter- In-Place, and coordinates the evacuation of incarcerated populations.

Capability Activity Process Flow



Capability Element Description Details

Capability Elements	Components and Description
Law Enforcement—crowd control	Uniformed/sworn, reserve, volunteer, and in-training officers to control a large crowd in a high-density area
Law Enforcement—traffic control	Uniformed/sworn, reserve, volunteer, and in-training officers to control traffic from entering and leaving the affected areas.
National Guard Civil Support Teams	To augment crowd control, traffic control, and hard target security.

Planning Assumptions

General

- Although applicable to several of the 15 National Planning Scenarios, the capability planning factors were developed from an in-depth analysis of the Radiological Dispersal Device scenario. Other scenarios were reviewed to identify required adjustments or additions to the planning factors and national targets.
- This capability applies to a wide range of incidents and emergencies, including accidental or deliberate disease outbreaks, natural disasters, and nuclear and conventional events.
- If the catastrophic incident results from terrorism, the Homeland Security Advisory System (HSAS) level will likely be raised regionally, and perhaps nationally. Elevation of the HSAS level requires additional local, State, and Federal security enhancements that may affect the availability of certain response resources.
- Police will be needed to direct traffic away from the contaminated area, prevent access to the contaminated area, and support movement of the population out of the contaminated area.
- Looting and/or damaging to unattended properties, especially shops and stores by armed hooligans and criminals should be considered.
- Public safety personnel will need to support the evacuation, sheltering, and protection of downwind populations.
- Public safety personnel will support the movement of approximately 35,000 people to shelters. Temporary housing will be needed.
- A decontamination process must be set up. Public safety personnel will be needed to support movement of the population in and out of the decontamination area.

Scenario-Specific

- The use of a radiological dispersion device (RDD) would have local implications on the public safety and security response teams. The assumption is that an RDD would be dispersed within a downtown or highly populated areas. With Washington, D.C., as an example, there are approximately 200–250 people in a single block. If this RDD were to affect an area of 36 blocks or more, 7,500–9,000 people would be affected. It is likely that local, State, and Federal law enforcement agencies would share resources to help contain the area and aid in crowd control for a high population such as this. Yet the States would have to balance the resources between preventing affected personnel from entering into other portions of the State by leaving the site.

Planning Factors from an In-Depth Analysis of a Scenario with Significant Demand for the Capability

Resource Organization	Estimated Capacity	Scenario Requirement Values	Quantity of Resources Needed
Law enforcement (for crowd control)	Capacity to control a large crowd within a downtown area	Sufficient numbers to regulate approximately 200 people per 36 blocks	Sufficient uniformed/sworn, reserve, volunteer, and in-training officers to accomplish the task
Law enforcement (for traffic control)	Capacity to control traffic from both entering and leaving the affected areas	Sufficient numbers to regulate approximately 7,000 people, depending on automobile traffic or mass transit numbers	Sufficient uniformed/sworn, reserve, volunteer, and in-training officers to accomplish the task
National Guard	Capacity to supplement local and regional law enforcement agencies	Sufficient to allow local law enforcement to perform law enforcement duties	Appropriate guards to augment law enforcement personnel for crowd control, traffic control, and hard target security (at the World Trade Center, 8,500 were deployed within 24 hours of the attacks)
Private security companies	Capacity to supplement local and regional law enforcement agencies	Sufficient to allow local law enforcement to perform law enforcement duties	Appropriate numbers to supplement law enforcement personnel for limited traffic control and provide target security for private sector sites

Approaches for Large-Scale Events

To avoid duplication of resources, chemical, biological, radiological, nuclear, or explosive (CBRNE) and law enforcement resource organizations should cross-train with other capabilities and foster cross-border cooperation.

National Targets and Assigned Levels

Responsible	Element Resource Unit	Type of Element	# of Units	Unit Measure (number per x)	Capability Activity supported by Element
Local/State	Law Enforcement Officers for Crowd Control	Personnel	Sufficient	Per 80% from local sources Per 20% from State sources	Secure Area Control traffic, crowd and scene
Local/ State/ Non-governmental organization	Law enforcement officers for traffic control	Personnel	Sufficient		Secure Area Control traffic, crowd and scene
State/Territory	National Guard Civil Support	Federal Resource	1	Per State/territory	Secure Area

Responsible	Element Resource Unit	Type of Element	# of Units	Unit Measure (number per x)	Capability Activity supported by Element
	Teams	Organization			Control traffic, crowd and scene

References

1. Homeland Security Presidential Directive/HSPD–8: National Preparedness. White House, Office of the Press Secretary. December 2003. <http://www.whitehouse.gov/news/releases/2003/12/20031217-6.html>.
2. National Response Plan. U.S. Department of Homeland Security. December 2004.
3. National Incident Management System. U.S. Department of Homeland Security. March 2004. <http://www.dhs.gov/interweb/assetlibrary/NIMS-90-web.pdf>.
4. The Office for Domestic Preparedness Guidelines For Homeland Security: Prevention and Deterrence. U.S. Department of Homeland Security, Office for Domestic Preparedness. June 2003. <http://www.ojp.usdoj.gov/odp/docs/ODPPrev1.pdf>.
5. Homeland Security Exercise and Evaluation Program, Volume II: Exercise Evaluation and Improvement. U.S. Department of Homeland Security, Office for Domestic Preparedness. October 2003. <http://www.ojp.usdoj.gov/odp/docs/HSEEPv2.pdf>.
6. Compendium of Federal Terrorism Training For State and Local Audiences. Federal Emergency Management Agency and U.S. Department of Homeland Security. 2004. <http://www.fema.gov/compendium/index.jsp>.
7. 2004 Emergency Response Guidebook: A Guidebook for First Responders During the Initial Phase of a Dangerous Goods/Hazardous Materials Incident. U.S. Department of Transportation. <http://HazMat.dot.gov/pubs/erg/erg2004.pdf>.
8. Catalog of Training Programs, 2005–2006. U.S. Department of Homeland Security, Federal Law Enforcement Training Center (FLETC). 2003–2004. <http://www.fletc.gov/cotp.pdf>.
9. Resource Typing Definitions–I: First 60 Resources. National Mutual Aid and Resource Management Initiative. U.S. Department of Homeland Security, Federal Emergency Management Agency. January 2004. http://www.fema.gov/pdf/preparedness/initial_60_rtd.pdf.
10. DHS, Office for Domestic Preparedness, Metropolitan Medical Response System (MMRS) Program, <http://mmrs.fema.gov>.