

CITIZEN EVACUATION AND SHELTER-IN-PLACE

Capability Definition

Citizen evacuation and shelter-in-place is the capability to prepare for, ensure communication of, and immediately execute the safe and effective sheltering-in-place of an at-risk population (and companion animals), and/or the organized and managed evacuation of the at-risk population (and companion animals) to areas of safe refuge in response to a potentially or actually dangerous environment. In addition, this capability involves the safe reentry of the population where feasible.

Outcome

Affected and at-risk populations (and companion animals) are safely sheltered-in-place and/or evacuated to safe refuge areas, in order to obtain access to medical care, physical assistance, shelter, and other essential services, and effectively and safely reentered into the affected area, if appropriate.

Relationship to National Response Plan Emergency Support Function (ESF)/Annex

This capability is supported by the following Emergency Support Functions (ESFs):

- ESF #1: Transportation
- ESF #5: Emergency Management
- ESF #6: Mass Care, Housing, and Human Services
- ESF #8: Public Health and Medical Services
- ESF #14: Public Safety
- ESF #15: External Affairs

Preparedness Tasks and Measures/Metrics

Activity: Develop and Maintain Plans, Procedures, Programs and Systems	
Critical Tasks	
Res.B.3a 1	Develop plans, procedures, and protocols to manage evacuations and sheltering-in-place
Res.B.3a 1.2.1	Develop evacuation procedures for populations and locations at risk (including high density areas, neighborhoods, high-rise buildings, subways, airports, special events venues, etc), and institutions that should begin evacuations early (e.g., hospitals, nursing homes, long-term care facilities and correctional facilities)
Res.B3a 1.1.1.1	Develop and distribute public education materials on evacuation/shelter-in-place preparation, plans, and procedures
Res.B3a 1.1.1.2	Participate in citizen preparedness activities to ensure that public information on

Activity: Develop and Maintain Plans, Procedures, Programs and Systems	
	evacuation/shelter-in-place preparation and processes is effectively communicated
Res.B3a 1.1.3	Participate in establishment of public information announcements to be issued as part of evacuation/shelter-in-place orders
Res.B3a 1.3.1	Develop and implement plans and procedures to identify in advance populations requiring assistance during evacuation/shelter-in-place
Res.B3a 1.3.1.1	Establish registry of populations requiring assistance during evacuation/sheltering-in-place
Res.B3a 1.3.1.2	Develop and implement procedures to identify and arrange for transportation to accommodate immobilized individuals or others requiring special assistance during transport
Res.B3a 1.3.2	Develop plans and procedures for identifying during an incident those populations requiring assistance with evacuation, including identification of type of assistance required
Res.B3a 1.3.3	Establish processes to ensure that immobilized and other individuals require special assistance can be moved to collection points for evacuation
Res.B3a 1.3.4	Establish processes for identifying and collecting individuals who do not go to collection points
Res.B3a 1.4.1	Pre-identify evacuee collection points and staging/reception areas (for immediate sheltering/processing)
Res.B3a 1.4.3.1	Pre-arrange contracts and agreements to ensure provision of transportation vehicle and drivers during an incident
Res.B3a 1.4.4	Identify and arrange for the staging and use of resources from outside the planning area
Res.B3a 1.4.5	Develop plans and procedures to get resources to those who have sheltered in place (Long term—3 days or more)
Res.B3a 1.4.6	Develop plans and procedures for coordinating with other agencies to meet basic needs during evacuation
Res.B3a 1.4.7	Develop agreements with neighboring areas regarding the movement and receipt of evacuees from the affected area
Res.B3a 1.2.4	Develop plans and procedures for evacuation/shelter-in place of companion animals
Preparedness Measures	
Appropriate informational materials for use in citizen preparedness for evacuation and shelter-in-place have been developed and coordinated with public education/citizen preparedness programs	Yes/No
Relevant planning and informational materials to be released to the public for evacuation or sheltering in place have been shared with the servicing public safety communication centers and Public Service Answering Points (PSAPs)	Yes/No
Plans addressing authority and decision-making processes for shelter-in-place and/or evacuations are in place	Yes/No
Plans addressing authority and procedures to declare and enforce a mandatory evacuation are in place	Yes/No
Plans are in place for the immediate evacuation of:	
▪ neighborhoods	Yes/No
▪ high-rise buildings	Yes/No

Activity: Develop and Maintain Plans, Procedures, Programs and Systems	
<ul style="list-style-type: none"> ▪ subways ▪ airports ▪ correctional facilities ▪ hospitals/nursing homes/assisted-living/elder care facilities ▪ special events venues ▪ other high-risk areas in response to a threat or attack 	<p>Yes/No</p> <p>Yes/No</p> <p>Yes/No</p> <p>Yes/No</p> <p>Yes/No</p> <p>Yes/No</p>
Processes are in place for identifying populations that may need assistance with evacuation/shelter-in-place, prior to an incident	Yes/No
Processes are in place for identifying, during an incident, populations that may need assistance with evacuation/shelter-in-place	Yes/No
Processes are in place for identifying and addressing the different types of assistance needed (e.g., physical movement, transportation assistance, language translation, etc.)	Yes/No
Populations that may need assistance with evacuation/shelter-in-place have been identified	Yes/No
<p>Evacuation plan(s) are in place to provide transportation and other evacuation assistance to all persons who need evacuation assistance; plans, at a minimum, address assistance for:</p> <ul style="list-style-type: none"> ▪ Non-institutionalized populations requiring assistance to be moved (e.g., the elderly, disabled, etc). ▪ Transient populations (e.g., the homeless; tourists and visitors); ▪ Institutionalized populations (e.g., nursing homes, hospitals, psychiatric institutions, boarding schools,) ▪ Populations out of the home (e.g., students, those in public venues) and the work force during a surprise incident ▪ Companion animals 	<p>Yes/No</p> <p>Yes/No</p> <p>Yes/No</p> <p>Yes/No</p> <p>Yes/No</p>
Plans are in place to coordinate with public safety agencies in evacuating incarcerated populations	Yes/No
Evacuation plan(s) identifying evacuation routes and traffic flow and control measures are in place	Yes/No
Evacuation routes are marked	Yes/No
Plans identifying measures to ensure adequate services (e.g. gas, food, water, tow trucks, medical emergencies, etc.) along the evacuation route(s) are in place	Yes/No
Plans to provide for leadership at evacuation staging points and/or at temporary evacuation shelters for up to 72 hours are in place	Yes/No
Plans are in place to coordinate with mass care agencies to provide required services at evacuation staging points and/or at temporary evacuation shelters for at least 72 hours	Yes/No
Arrangements are in place with agencies to be involved in evacuations/sheltering, staffing of shelters, logistical supply, security, and support of shelters	Yes/No
Plans are in place to coordinate with medical care agencies to provide medical support, supervision, and symptom surveillance of evacuees during a prolonged evacuation (e.g., monitoring and caring for people with pre-existing medical conditions or disabilities and those who may become ill during the evacuation)	Yes/No
Memorandums of understanding (MOU) with jurisdictions that will serve as host	Yes/No

Activity: Develop and Maintain Plans, Procedures, Programs and Systems

communities for evacuees during an incident have been developed	
Plans are in place to address re-entry of the general population	Yes/No
Plans are in place to address re-entry support for populations requiring assistance to return	Yes/No
Plans are in place to coordinate with utility companies regarding safety instructions for returning homeowners	Yes/No

Activity: Develop and Maintain Training and Exercise Programs

Critical Tasks	
Res.B3a 2	Develop and implement training programs for staff involved in evacuation/shelter-in-place implementation
Res.B3a 2.2.1	Develop and implement exercises involving evacuation of various types of locations to local shelters as well as more distant cities
Res.B3a 2.2.2	Assess the training and exercise gaps
Res.B3a 2.2.3	Review existing training and exercise resources available for participation and/or inclusion in comprehensive training and exercise strategy
Preparedness Measures	Metric
Staff of agencies to be involved in evacuations/sheltering, staffing of shelters, logistical supply, and support of shelters have been trained	Yes/No
Pre-event exercises of the notification and activation of evacuation and shelter-in-place plans are conducted with citizen participation	Yes/No
Local emergency response agencies/staff including public safety answering points, are trained on local evacuation/shelter-in-place strategies	Yes/No

Performance Tasks and Measures/Metrics

Activity: Direct Evacuation and/or In-Place Protection Tactical Operations

Definition: In response to a hazardous condition for a locality, direct, manage, and coordinate evacuation and/or in-place sheltering procedures for both the general population and those requiring evacuation assistance throughout incident.

Critical Tasks	
Res.B3a 3.1.2	Identify populations, institutions (e.g., hospitals, nursing homes, correctional facilities) and locations to be evacuated or sheltered in place
Res.B3a 3.1.3	Coordinate with law enforcement to identify risk (e.g., from a potential terrorist attack) to transportation infrastructure that may be used for evacuation
Res.B3a 3.1.4	Coordinate with law enforcement to anticipate secondary attack, and identify security and survival vulnerabilities of the evacuated or sheltered population and protective countermeasures
Res.B3a 3.2.1	Identify appropriate decision-making authority responsible for deciding a course of action to address the incident
Res.B3a 3.2	Determine appropriate course of action to address the incident

Res.B3a 3.4.4	Coordinate with serving Public Service Answering Points regarding communication of the evacuation and/or shelter-in-place decision	
Res.B3a 3.3	Re-assess evacuation/shelter-in-place plans and begin implementation	
Res.B3a 3.3.2	Re-assess location of evacuation collection points and staging areas identified in plans and adjust as needed	
Res.B3a 3.3.1	Re-assess evacuation traffic management plan and adjust as needed	
Res.B3a 3.4.2	Coordinate with mass care, medical, and other services to set up evacuation staging areas	
Res.B3a 3.3.1.1	Re-assess emergency evacuation routes and adjust as needed	
Res.B3a 3.4.1	Coordinate with transportation agencies to implement evacuation plans	
Res.B3a 3.3.4	Coordinate with mass care services to identify location of shelter facilities and other mass care services for evacuees	
Res.B3a 3.3.3	Coordinate with mass care agencies to assess the need for emergency feeding and sheltering activities	
Res.B3a 3.4.5	Coordinate with appropriate agencies regarding caring for companion animals in transit	
Res.B3a 3.5.3	Coordinate medical assistance for special need evacuees in transit	
Res.B3a 3.5.4	Notify appropriate agencies of anticipated medical assistance required upon arrival at temporary locations (staging area, shelters, etc)	
Res.B3a 3.6	Coordinate with HazMat to conduct decontamination of evacuees, including those with disabilities and medical needs (including their equipment)	
Res.B3a 3.7	Coordinate with environmental health to monitor progress of affected area to determine when re-entry is deemed appropriate	
Performance Measures		Metric
Appropriate authority to select protective strategy was identified		Yes/No
Appropriate authority identified the information that needed to be assessed		Yes/No
Necessary information was gathered		Yes/No
Appropriate and available strategies were identified		Yes/No
An appropriate strategy was selected and communicated		Yes/No
Appropriate protective strategy to meet the potential risk/danger to the various populations was selected within appropriate timeframe		Yes/No
Citizen protection decision was coordinated with surrounding jurisdictions to support evacuation routes, and activate reception facilities and shelters		Yes/No
Re-entry planning was conducted during the course of response to the event		Yes/No

Activity: *Activate Evacuation and/or In-Place Protection*

Definition: In response to activation, identify and ensure notification of at-risk populations, and identify populations requiring assistance in evacuation and/or in-place protection.

Critical Tasks

Res.B3a 4.1	Identify and mobilize appropriate personnel
Res.B3a 4.2.1	Issue shelter-in-place order
Res.B3a 4.2.3	Issue evacuation order
Res.B3a 4.2.4	Coordinate with agencies providing emergency public information and warning to ensure

	effective communication of evacuation/shelter-in-place order and procedures	
Res.B3a 4.4.1	Determine locations of populations who may need assistance with evacuation from affected area (e.g., using pre-established registry of populations in facilities)	
Res.B3a 4.4.2	Implement plan to capture self-reporting by those requiring assistance with evacuation (e.g., via hot-line)	
Res.B3a 4.4.3	Conduct triage upon identification to determine type of assistance required	
Res.B3a 4.5	Implement systems for tracking evacuees and those who shelter in place	
Res.B3a 4.3	Implement notification protocols for communication to Public Service Answering Points (911 centers)	
Performance Measures		Metric
Time to notify affected population of shelter-in-place order		Within 15 minutes of order to shelter-in-place
The most affected populations for evacuation are notified first (e.g., ring evacuations)		Yes/No
The public is notified of evacuation procedures, routes, locations, and sources of evacuation information throughout the incident		Yes/No
Percent of population requiring assistance that has been identified		100%

Activity: Implement Evacuation Orders for General Population

Definition: Assist the self-evacuation of affected population by providing public information and instructions, traffic control, and support services to evacuees along evacuation routes.

Critical Tasks		
Res.B3a 5.1	Provide public notification agencies with information to provide instructions for evacuation	
Res.B3a 5.2	Activate approved traffic control plan	
Res.B3a 5.2.1	Coordinate with appropriate agencies regarding support for traffic control	
Res.B3a 5.1.2	Provide information regarding evacuation staging area location	
Res.B3a 5.4.3	Implement procedures for allowing voluntary tracking of evacuees who participate voluntarily	
Res.B3a 4.6	Monitor evacuation traffic flow/demand and adjust evacuation traffic management plan and measures as appropriate	
Res.B3a 5.4.1	Provide services (e.g. gas, food, water, tow trucks, etc.) along the evacuation route(s)	
Res.B3a 5.4.2	Monitor evacuation traffic to identify those no longer able to self-evacuate and requiring specialized assistance	
Performance Measures		Metric
Frequency of notification to the public of evacuation procedures, routes, locations, or sources of evacuation information throughout the incident. <i>[This is incident driven and the times need to change from an immediate vs. long term incident]</i>		Every 30 minutes initially, tapering off to every 2 hours throughout evacuation
Time in which the traffic and transportation plan is implemented to enable evacuation within the incident timeframe		Within 1-3 hours from evacuation order
Time to complete the evacuation of the affected general population for an event with advanced warning <i>[This is a general timeframe and may vary greatly beyond this period depending on the type of hazard]</i>		Within 24-72 hours of the order to evacuate

Activity: *Collect and Evacuate Population Requiring Assistance*

Definition: Upon identification of individuals requiring assistance and type of assistance required, collect and move individuals to established evacuation staging/reception area for further services.

Critical Tasks

Res.B3a 6.1	Order transportation services for evacuation
Res.B3a 6.1.1	Coordinate with supporting agencies and pre-arranged providers to obtain appropriate means of transportation for those requiring transportation assistance (e.g., buses, ambulances, handicap-assisted vans)
Res.B3a 6.1.2	Implement plans for providing alternative means of transport for immobilized individuals or those needing other special assistance in transit
Res.B3a 6.2.3	Provide appropriate specialized transportation services for those requiring additional support during evacuation
Res.B3a 6.2.4	Coordinate provision of medical support services for evacuating special needs populations
Res.B3a 6.3.1	Collect individuals at pre-established collection points and transfer to staging/reception area
Res.B3a 6.3.2	Collect individuals at non-specified locations and transfer to staging/reception area

Performance Measures**Metric**

Requests for evacuation assistance for those in need have been met in accordance with established procedures	Yes/No
Procedures for obtaining evacuation assistance have been publicized to general public	Yes/No
Service organizations follow established procedures to provide evacuation assistance	Yes/No
Sources of surge transportation assistance for evacuations have been contacted and provided information on their role	Yes/No
Sources of assistance to evacuated persons with special needs have been contacted and provided information on their role	Yes/No
Specific arrangements for medical support services for evacuation of those requiring it have been implemented	Yes/No
Transportation assistance is provided for/by hospitals, nursing homes and other institutions that will need to evacuate or help/evacuate those in their care	Yes/No
Other collection points for individuals needing special evacuation assistance have been established and publicized	Yes/No

Activity: *Operate Evacuation Staging/Reception Area*

Definition: In coordination with mass care, medical, and other service agencies, provide immediate basic needs and processing of evacuated individuals en route to other destinations (e.g., to shelters, hospitals, etc).

Critical Tasks

Res.B3a 7.1	Establish evacuation staging/reception area
Res.B3a 7.1.1	Conduct security sweeps of evacuation staging/reception areas prior to occupancy, if incident is a terrorist attack or suspected terrorist attack

Res.B3a 7.2.1	Provide, in coordination with mass care, for basic needs support and processing of evacuated individuals and companion animals in preparation for further movement	
Res.B3a 7.2.2	Provide, in coordination with medical care, access to medical services for evacuated individuals in staging/reception area	
Res.B3a 7.2.3	Provide, in coordination with WMD/Hazardous Materials Response capability, for decontamination of evacuated individuals if necessary (including those with medical needs)	
Res.B3a 7.2.4	Coordinate with appropriate agencies to address needs of those requiring assistance	
Res.B3a 7.3.1	Provide tracking of people needing evacuation assistance	
Res.B3a 7.3.2	Provide voluntary registration/tracking system for general population to support reunification	
Performance Measures		Metric
Evacuation staging/reception areas in the affected area have been coordinated with necessary sites and assisting agencies		Yes/No
Public information messages regarding evacuation staging/reception areas are prepared and disseminated		Yes/No
Percentage of evacuees whose basic needs are met at the staging area		100%

Activity: *Manage Incoming Evacuees*

Definition: In coordination with other service agencies, provide short-term and long-term support to evacuees arriving from affected areas.

Critical Tasks		
Res.B3a 8.1	Establish reception areas/centers for evacuees in the host jurisdiction	
Res.B3a 8.2	Monitor traffic movement of self-evacuees into/through area, and redirect as necessary	
Res.B3a 8.3	Coordinate with support agencies to provide short-term needs for evacuees, such as directions, information, shelter, medical care, and other assistance	
Res.B3a 8.4	Plan, in coordination with social service agencies, for long-term support for evacuees (e.g., temporary housing, schools, job searches, etc.)	
Performance Measures		Metric
Evacuation staging/reception areas in the host jurisdiction have been coordinated with necessary authorities and assisting agencies		Yes/No
Public information messages to publicize evacuation staging/reception areas in the host jurisdiction are prepared and disseminated		Yes/No
Processing, registration and tracking systems have been established with procedures, necessary forms and materials, and trained staff		Yes/No
Plans are completed and arrangements established to provide necessary care, shelter, lodging and short term needs		Yes/No

Activity: *Implement In-Place Protection Procedures*

Definition: Upon in-place protection activation, assist at-risk population in sheltering in homes or designated in-place sheltering locations.

Critical Tasks

Res.B3a 9.2	Identify steps to reduce infiltration of hazard(s)	
Res.B3a 9.3.1	Ensure access to emergency communications while sheltered-in-place	
Res.B3a 9.3.2	Use emergency alerts system and Public Service Answering Points (PSAPs) to advise and update information of incident	
Performance Measures		Metric
Time to notify affected population of initial in-place protection procedures		Immediately, using standing emergency instructions.
Time to shelter-in-place the affected general population		Less than 30 minutes
Frequency of follow-on instructions to sheltered-in-place populations (e.g. hazard mitigation recommendations)		Continuously

Activity: *Assist Re-Entry*

Definition: Upon notification of the affected area being safe, assist in-shelter population and/or evacuees in re-entering area.

Critical Tasks

Res.B3a 10.1	Adapt and implement reentry plans as officials announce areas within the region to be approved for reentry	
Res.B3a 10.2	Assist in the re-entry of people and pets into evacuated areas when appropriate and safe	
Res.B3a 10.3	Provide re-entry information to the public on a timely and on-going basis	
Res.B3a 10.4	Coordinate with appropriate agencies to provide instructions and information if re-entry is not feasible	
Performance Measures		Metric
Re-entry planning is conducted during the course of response to the event		Yes/No
Evacuees are notified of temporary re-entry procedures		Yes/No
Evacuees are instructed of permanent re-entry procedures, including safety precautions		Yes/No

Activity: *Demobilize Citizen Evacuation and Shelter-In-Place Operations*

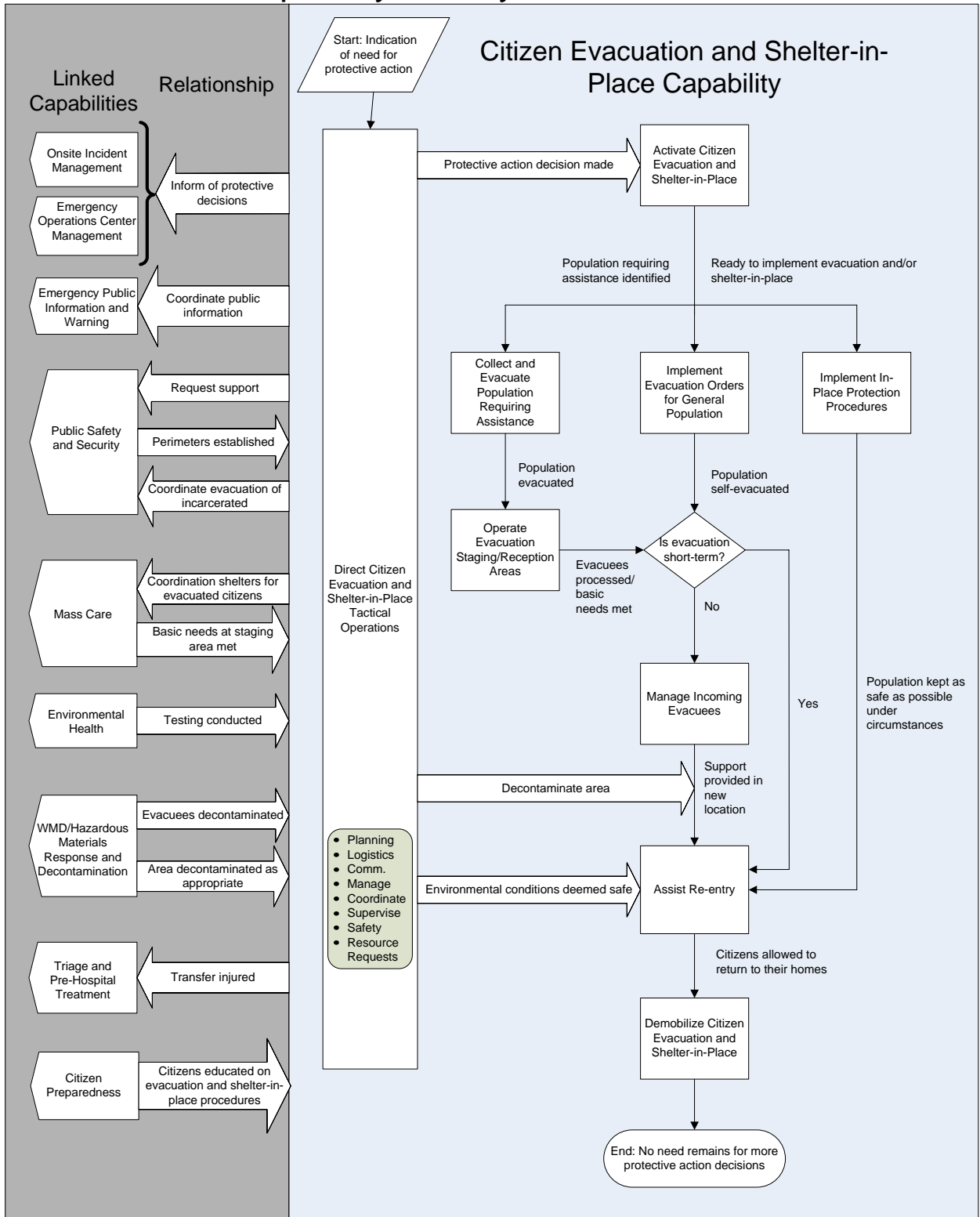
Definition: Upon completion of assigned duties, decontaminate equipment, supplies, and personnel if appropriate, and demobilize.

Critical Tasks	
Res.B3a 11.1	Arrange for decontamination of equipment, supplies, and personnel used in evacuation/in-place protection
Res.B3a 11.2	Participate in incident debriefing on evacuation/in-place protection implementation
Res.B3a 11.3	Release personnel supporting evacuation/in-place protection
Performance Measures	Metric
Citizen Evacuation and/or Shelter-In-Place personnel are debriefed	Yes/No
Lessons learned are identified and addressed	Yes/No

Linked Capabilities

Linked Capability	Relationship
Citizen Preparedness	Citizen Evacuation/Shelter-in-Place capability coordinates with Citizen Preparedness to ensure that citizens are educated on how to prepare for and conduct evacuation and sheltering-in-place
Onsite Incident Management	Citizen Evacuation/Shelter-in-Place capability management integrates itself into the local Incident Command/Unified Command system to coordinate protective action decisions.
WMD/Hazardous Materials Response and Decontamination	Citizen Evacuation/Shelter-in-Place capability coordinates with WMD/Hazardous Materials Response and Decontamination to ensure evacuation and/or in-place protection personnel and equipment are appropriately decontaminated. WMD also supports decontamination of evacuees when necessary.
EOC Management	Citizen Evacuation/Shelter-in-Place capability management works through the EOC Management to notify affected and general population of protective action decisions.
Public Safety and Security Response	Citizen Evacuation/Shelter-in-Place capability relies upon Public Safety and Security Response assistance to safely maneuver affected populations through evacuation routes and provide assistance for traffic and crowd control. Public Safety and Security also handles the evacuation of the incarcerated populations at risk.
Triage/Medical Surge	Citizen Evacuation/Shelter-in-Place capability coordinates with Triage and/or Medical Surge to obtain immediate medical treatment for evacuees in need, either en-route or at evacuee staging area.
Mass Care	Citizen Evacuation/Shelter-in-Place capability coordinates with Mass Care to provide basic services to evacuees and assists in transferring evacuees to Mass Care shelters for at-risk populations.
Emergency Public Information and Warning	Citizen Evacuation/Shelter-in-Place capability coordinates with emergency public information and warning to provide accurate and timely and continuous information to the affected and general populations regarding evacuation and/or shelter-in-place orders and procedures, and subsequent reentry information and instructions.
Environmental Health	Citizen Evacuation/Shelter-in-Place capability relies on environmental health capability for assessment of hazards to determine whether areas are safe for re-entry.

Capability Activity Process Flow



Capability Element Description Details

Capability Elements	Components and Description
Emergency Alert System (EAS)	Established by the FCC in 1994 to provide the President with access to thousands of broadcast stations, cable systems and participating satellite programmers to transmit a message to the public
Other emergency alert and notification systems	Any notification system capable of reaching 100% of the at-risk population, including a redundant capability
Traffic control packages	Teams of law enforcement personnel and traffic control equipment (barriers, cones, directional signals)
Transportation resources	Buses and other mass transit vehicles including drivers
Local evacuation plan	Addressing components identified in preparedness measures/metrics
Local evacuation education program	Personnel and information dissemination equipment to provide local training on evacuation, reentry and shelter-in-place processes
Small Animal Transport Teams	Per NIMS
DOT Evacuation Coordination Team (Type I, II, and III)	Per NIMS, facilitates the rapid, efficient, and safe evacuation of threatened populations
DOT Evacuation Liaison Team	Per NIMS, provides support in State and local emergency response efforts by compiling, analyzing, and disseminating traffic-related information that can be used to facilitate the rapid, efficient, and safe evacuation and reentry of threatened populations.

Planning Assumptions

General

- Although applicable to several of the 15 National Planning Scenarios, the capability factors were developed from an in-depth analysis of the Chlorine Tank Explosion scenario. Other scenarios were reviewed to identify required adjustments or additions to the planning factors and national targets.
- This capability applies to a wide range of incidents and emergencies, including accidental or deliberate disease outbreaks, natural disasters, and nuclear and conventional events.
- Large-scale evacuations, organized or self-directed, may occur. More people are initially likely to flee and seek shelter for attacks involving chemical, biological, radiological or nuclear agents than for natural events.
- Transportation and traffic routes will be severely and negatively affected by the evacuation
- Many evacuees will require provision of transportation.
- The health-related implications of an incident may aggravate or impair attempts to implement a coordinated evacuation management strategy.
- Public anxiety and stress will result from evacuations, requiring mental health services, appropriate risk communications, and public education/instruction.
- Local jurisdictional resources will be quickly overwhelmed and will require mutual aid from other jurisdictions and support from Federal, State, and regional agencies.
- Through memorandums of understanding (MOUs) incorporated into planning, adjacent communities will be prepared to handle significant numbers of evacuees from affected areas.

These host communities also will identify resources, personnel, and equipment to shelter and support evacuees.

- Pre-event identification of shelter sites has been planned for by emergency management agencies and MOUs are in place for use of the facilities.
- Although shelters will require a minimum time for setup and activation, populations will require services immediately on evacuation, notably those for special needs populations and containment.
- For shelter-in-place, evacuation, sheltering, and reentry planning, each jurisdiction has unique hazards and unique resources. Capabilities for at-risk populations are based on jurisdictional hazard vulnerability analysis. Plans (including emergency operations plans), procedures, mutual aid agreement, and so forth must be in place to support effective evacuation and sheltering, dependent on the hazard/risk analysis and the resources available for the at-risk population. The measurement for this capability is: Can the jurisdiction evacuate and/or shelter the at-risk population and, if they cannot, what actions will procure/garner adequate resources for them?

Scenario-Specific

- A large amount of the chemical chlorine has been released into the atmosphere (a plume) and is disbursed in a widely populated area. Decontamination of evacuees will require additional resources and triage areas before citizens can be sheltered; therefore, fire/emergency medical services (EMS), hospitals, and HazMat teams will be required to decontaminate evacuees.
- Local and regional resources will be quickly overwhelmed and require State and Federal assistance.
- Long-term sheltering and decontamination will be required.
- City/jurisdiction is a large urban area with a network of streets and highways. Within the affected area, the evacuation and reentry routes and zones encompass 25 major intersections in a 25-mile evacuation radius.
- Approximately 25 percent of the evacuated population will require shelter. The remaining populations will self-evacuate and arrange own shelter.
- Approximately one percent of the 25 percent of the evacuated populations are special need populations and will require medical shelters and appropriate transportation.

Planning Factors from an In-Depth Analysis of a Scenario with Significant Demand for the Capability (Chlorine Tank Explosion)

Resource Organization	Estimated Capacity	Scenario Requirement Values	Quantity of Resources Needed
Emergency alert and notification systems (e.g., sirens, emergency alert system (EAS), call-out systems, television captioning system)	1 system that will alert 100% of the at-risk population	Warning and notification of 700,000 people	1 system within the jurisdiction to reach the at-risk population with redundant capability
Local, regional, and State public works	Provision of traffic control equipment and towing of	70,000 people will self-evacuate and reenter the affected areas when safe,	Traffic control package containing:

Resource Organization	Estimated Capacity	Scenario Requirement Values	Quantity of Resources Needed
	vehicles/obstacles	leading to traffic congestion and delaying response assets	Barriers Cones Directional signs/signals Within high-risk evacuation area (distributed to predetermined locations) 1,000 barriers 1,000 traffic cones 50 directional signs
Local and regional transportation jurisdictions	Ability to provide transportation to evacuees	630,000 people will require assistance with evacuation through buses; each bus can hold 50 people and can be recycled and used multiple times during an evacuation	Local and regional (combined): 100 buses, including school and mass transit buses and other vehicles of mass transportation State and unaffected areas: 100 buses Federal: not timely resources for immediate evacuation, but can be used for reentry
Federal transportation resources	Ability to provide reentry support	630,000 people will need reentry assistance	Support after utilizing local, regional, and State resources Federal: 100 buses or other mass transit vehicles
Special needs shelters/shelter-in-place requirements	Shelters need capacity to support special needs functions (e.g., oxygen, durable medical products, medical and emotional support)	1,800 persons with special needs will need assistance	Refer to health and medical capabilities
Security and law enforcement	The event occurs in a large urban area with extensive network of streets and traffic flows	Legal authority to alter traffic flow and use of highways 1 law enforcement officer at major intersections; 25 major intersections in the evacuation route Other persons, (non-law enforcement types, such as Volunteers in Police Service) assigned traffic	Local: 25 law enforcement officers Regional/State: 150–175 officers working outside the affected area restricting access and diverting highway traffic Local: 200 non-law enforcement persons to direct traffic along the evacuation/reentry routes

Resource Organization	Estimated Capacity	Scenario Requirement Values	Quantity of Resources Needed
		control duties at other intersections directing traffic flow	Regional/State: resources for reentry would be needed to augment local resources: 300 persons
Small Animal Transport Teams	60% of households have companion animals (CAs) and most people will not evacuate if they believe there is no facility to support them and their animals (general population shelters generally do not accept CAs)	Average: 2 pets/household	10 Small Animal Transport Teams (per National Incident Management System (NIMS) typing)

National Targets and Assigned Levels

Responsible	Element Resource Unit	Type of Element	# of Units	Unit Measure (number per x)	Capability Activity supported by Element
Federal	Emergency Alert System (EAS)	Federal Resource	1	Nationally	Activate Evacuation and Shelter-In-Place Re-Entry
State	Public warning system	Non-NIMS Resource Organization	1	Per State	Activate Evacuation and Shelter-In-Place Re-Entry
Local	Public Warning System	Non-NIMS Resource Organization	1	Per jurisdiction	Activate Evacuation and Shelter-In-Place Protection Re-Entry
Local	Evacuation Plan	Plan	1	Per city/county	All activities
Local	Local evacuation education program	Non-NIMS Resource Organization	1	Per jurisdiction	All activities
Local	Transportation Resources	Resource Organization	17	Per 100,000 population	Implement Evacuation Orders for General Population Implement In-Place Protection Procedures
State	Transportation Resources	Resource Organization	17	Per 100,000 population	Implement Evacuation Orders for General Population Implement In-Place Protection Procedures

Responsible	Element Resource Unit	Type of Element	# of Units	Unit Measure (number per x)	Capability Activity supported by Element
Federal	Transportation Resources	Resource Organization	17	Per 100,000 population	Implement Evacuation Orders for General Population Implement In-Place Protection Procedures
Local	Traffic control package	Resource Organization	1	In accordance with Evacuation Plans	Implement Evacuation Orders for General Population Implement In-Place Protection Procedures
State	Law Enforcement and Security	Resource Organization		As required per incident	Implement Evacuation Orders for General Population Implement In-Place Protection Procedures
Local	Fire/Emergency medical services (EMS)	Resource Organization		As required per incident	Implement Evacuation Orders for General Population Implement In-Place Protection Procedures
Local	Tow trucks	Transportation Equipment		As required per incident	Implement Evacuation Orders for General Population Implement In-Place Protection Procedures
Federal	Small Animal Transport Teams	NIMS-typed resource organization		As required per incident	Implement Evacuation Orders for General Population Implement In-Place Protection Procedures
Federal	DOT Evacuation Coordination Team (Type I, II, and III)	NIMS-typed resource organization		As required per incident	Implement Evacuation Orders for General Population Implement In-Place Protection Procedures
Federal	DOT Evacuation Liaison Team	NIMS-typed resource organization		As required per incident	Implement Evacuation Orders for General Population Implement In-Place Protection Procedures

References

1. Homeland Security Presidential Directive/HSPD-8: National Preparedness. The White House, Office of the Press Secretary. December 2003. <http://www.whitehouse.gov/news/releases/2003/12/20031217-6.html>.
2. National Response Plan. U.S. Department of Homeland Security. December 2004.
3. National Incident Management System. U.S. Department of Homeland Security. March 2004. <http://www.dhs.gov/interweb/assetlibrary/NIMS-90-web.pdf>.
4. The National Strategy for the Physical Protection of Critical Infrastructures and Key Assets. Office of Homeland Security. February 2003. http://www.dhs.gov/interweb/assetlibrary/Physical_Strategy.pdf.
5. Homeland Security Exercise and Evaluation Program, Volume II: Exercise Evaluation and Improvement. U.S. Department of Homeland Security, Office for Domestic Preparedness. October 2003. <http://www.ojp.usdoj.gov/odp/docs/HSEEPv2.pdf>.
6. Resource Typing Definitions-I: First 60 Resources. National Mutual Aid and Resource Management Initiative. U.S. Department of Homeland Security, Federal Emergency Management Agency. January 2004. http://www.fema.gov/pdf/preparedness/initial_60_rtd.pdf.
7. Guide for All-Hazard Emergency Operations Planning: State and Local Guide 101. Federal Emergency Management Agency. September 1996. <http://www.fema.gov/pdf/rrr/slg101.pdf>.
8. Emergency Management Accreditation Program Standards. September 2003. <http://www.emaponline.org/index.cfm>.
9. National Strategy for Homeland Security. Office of Homeland Security. July 2002. http://www.dhs.gov/interweb/assetlibrary/nat_strat_hls.pdf.
10. NFPA 1600: Standard on Disaster/Emergency Management and Business Continuity Programs. National Fire Protection Association. 2004. <http://www.nfpa.org/PDF/nfpa1600.pdf?src=nfpa>
11. NFPA 5000, Building Construction and Safety Code™, National Fire Protection Association, 2006 Edition. <http://www.nfpa.org/aboutthecodes/AboutTheCodes.asp?DocNum=5000>
12. NFPA 130, Standard for Fixed Guideway Transit and Passenger Rail Systems, National Fire Protection Association, 2003 Edition. <http://www.nfpa.org/aboutthecodes/AboutTheCodes.asp?DocNum=130>
13. NFPA 101: Life Safety Code. National Fire Protection Association. 2003. <http://www.nfpa.org/aboutthecodes/AboutTheCodes.asp?DocNum=101>
14. NFPA 1221: Standard for the Installation, Maintenance, and Use of Public Fire Service Communications Systems. National Fire Protection Association. 2002 Edition. <http://www.nfpa.org/aboutthecodes/AboutTheCodes.asp?DocNum=1221>.
15. NFPA 1561: Standard on Emergency Services Incident Management System. National Fire Protection Association. 2005. <http://www.nfpa.org/aboutthecodes/AboutTheCodes.asp?DocNum=1561>
16. DHS, Office for Domestic Preparedness, Metropolitan Medical Response System (MMRS) Program, <http://mmrs.fema.gov>.